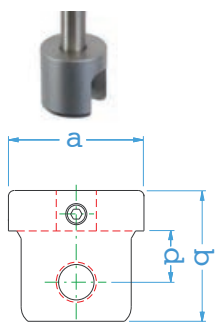


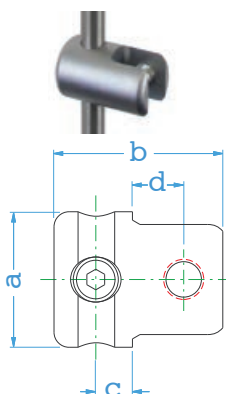
TOP PANEL SUPPORTS



Part #	Diameter (a)	Length (b)	Rod Offset (c)	Screw Offset (d)	Panel Thickness (e)	Rod Diameter
RG05	16mm (5/8")	16mm (5/8")	N/A	6mm (15/64")	up to 7mm (1/4")	6mm (1/4")

Finish: Satin Chrome
Load Limit: 11.5kg (25lb) each. *Subject to fixing
Allen Wrench: 1.5mm, 2.5mm Metric

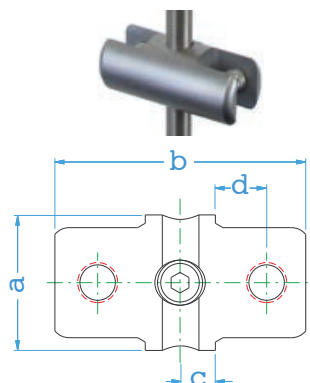
SIDE PANEL SUPPORTS / SINGLE



Part #	Diameter (a)	Length (b)	Rod Offset (c)	Screw Offset (d)	Panel Thickness (e)	Rod Diameter
RG01	16mm (5/8")	25mm (63/64")	7mm (9/32")	6mm (15/64")	up to 7mm (1/4")	6mm (1/4")
RGN01	16mm (5/8")	23mm (29/32")	7mm (9/32")	6mm (15/64")	up to 7mm (1/4")	6mm (1/4")
RG14	20mm (13/16")	29mm (1-1/8")	7mm (9/32")	6mm (15/64")	up to 12.5mm (1/2")	6mm (1/4")
RG01-10	18mm (45/64")	29mm (1-1/8")	10mm (3/8")	6mm (15/64")	up to 7mm (1/4")	10mm (3/8")
RG14-10	20mm (13/16")	29mm (1-1/8")	10mm (3/8")	6mm (15/64")	up to 12.5mm (1/2")	10mm (3/8")

Finish: Satin Chrome
Load Limit: 11.5kg (25lb) each. *Subject to fixing
Allen Wrench: 1.5mm, 2.5mm Metric

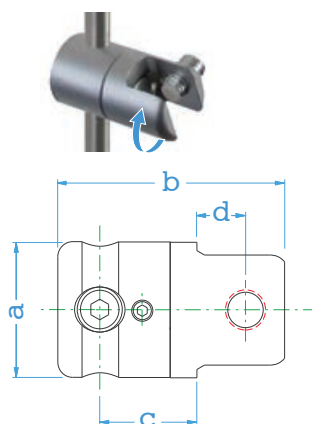
SIDE PANEL SUPPORTS / DOUBLE



Part #	Diameter (a)	Length (b)	Rod Offset (c)	Screw Offset (d)	Panel Thickness (e)	Rod Diameter
RG02	16mm (5/8")	36mm (1-27/32")	7mm (9/32")	6mm (15/64")	up to 7mm (1/4")	6mm (1/4")
RG02-10	18mm (45/64")	40mm (1-9/16")	10mm (3/8")	6mm (15/64")	up to 7mm (1/4")	10mm (3/8")

Finish: Satin Chrome
Load Limit: 11.5kg (25lb) each. *Subject to fixing
Allen Wrench: 1.5mm, 2.5mm Metric

MULTI-POSITION PANEL/SHELF SUPPORT SINGLE



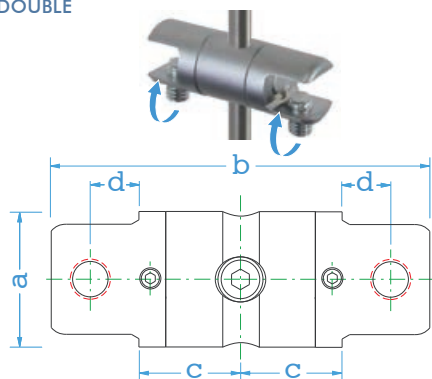
Part #	Diameter (a)	Length (b)	Rod Offset (c)	Screw Offset (d)	Panel Thickness (e)	Rod Diameter
RG11*	16mm (5/8")	30mm (1-3/16")	12.5mm (1/2")	6mm (15/64")	up to 7mm (1/4")	6mm (1/4")
RG13*	16mm (5/8")	46mm (1-13/16")	12.5mm (1/2")	6mm (15/64")	up to 10mm (3/8")	6mm (1/4")
RG11-10*	18mm (45/64")	34mm (1-5/16")	12.5mm (1/2")	6mm (15/64")	up to 7mm (1/4")	10mm (3/8")
RG13-10*	18mm (45/64")	49mm (1-15/16")	12.5mm (1/2")	6mm (15/64")	up to 10mm (3/8")	10mm (3/8")

*Multi-Position Supports - Adjustable to any angle. Can be locked into position.

Finish: Satin Chrome
Load Limit: 11.5kg (25lb) each. *Subject to fixing
Allen Wrench: 1.5mm, 2.5mm Metric

*The fractional inch and metric measurements are rounded up or down to the nearest value.

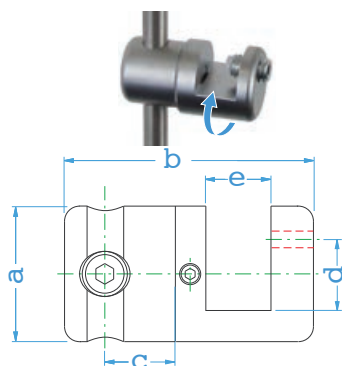
MULTI-POSITION PANEL/SHELF SUPPORT DOUBLE



Part #	Diameter (a)	Length (b)	Rod Offset (c)	Screw Offset (d)	Panel Thickness (e)	Rod Diameter
RG21*	16mm (5/8")	46mm (1-13/16")	12.5mm (1/2")	6mm (15/64")	up to 7mm (1/4")	6mm (1/4")
RG23*	18mm (45/64")	46mm (1-13/16")	12.5mm (1/2")	6mm (15/64")	up to 10mm (3/8")	6mm (1/4")
RG21-10*	18mm (45/64")	49mm (1-15/16")	15mm (19/32")	6mm (15/64")	up to 7mm (1/4")	10mm (3/8")
RG23-10*	18mm (45/64")	49mm (1-15/16")	15mm (19/32")	6mm (15/64")	up to 10mm (3/8")	10mm (3/8")

*Multi-Position Supports - Adjustable to any angle. Can be locked into position.

MULTI-POSITION TOP/BOTTOM PANEL SUPPORTS / SINGLE

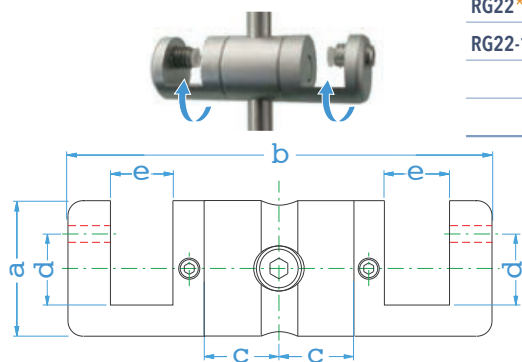


Part #	Diameter (a)	Length (b)	Rod Offset (c)	Screw Offset (d)	Panel Thickness (e)	Rod Diameter
RG12*	16mm (5/8")	33mm (1-17/64")	12.5mm (1/2")	6mm (15/64")	up to 7mm (1/4")	6mm (1/4")
RG12-10*	18mm (45/64")	37mm (1-7/16")	15mm (19/32")	6mm (15/64")	up to 7mm (1/4")	10mm (3/8")

*Multi-Position Supports - Adjustable to any angle. Can be locked into position.

Finish: Satin Chrome
Load Limit: 11.5kg (25lb) each. *Subject to fixing
Allen Wrench: 1.5mm, 2.5mm Metric

MULTI-POSITION TOP/BOTTOM PANEL SUPPORTS / DOUBLE

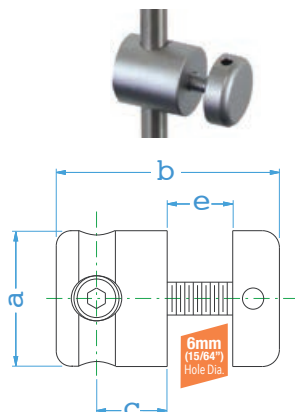


Part #	Diameter (a)	Length (b)	Rod Offset (c)	Screw Offset (d)	Panel Thickness (e)	Rod Diameter
RG22*	16mm (5/8")	52mm (2-3/64")	12.5mm (1/2")	6mm (15/64")	up to 7mm (1/4")	6mm (1/4")
RG22-10*	18mm (45/64")	54mm (2-1/4")	15mm (19/32")	6mm (15/64")	up to 7mm (1/4")	10mm (3/8")

*Multi-Position Supports - Adjustable to any angle. Can be locked into position.

Finish: Satin Chrome
Load Limit: 11.5kg (25lb) each. *Subject to fixing
Allen Wrench: 1.5mm, 2.5mm Metric

PANEL SUPPORTS WITH HOLES / SINGLE

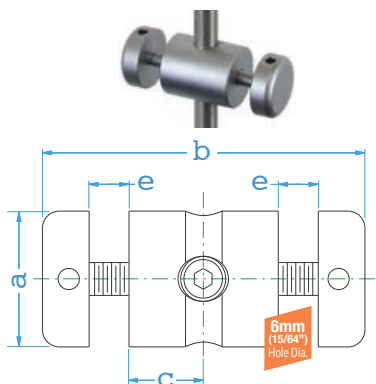


Part #	Diameter (a)	Length (b)	Rod Offset (c)	Screw Offset (d)	Panel Thickness (e)	Rod Diameter
RS13	16mm (5/8")	27mm (1-1/16")	10mm (3/8")	N/A	up to 5-6mm (1/4")	6mm (1/4")
RS13/S^{3/8}	16mm (5/8")	27mm (1-1/16")	10mm (3/8")	N/A	up to 10mm (3/8")	6mm (1/4")
RS13/S^{1/2}	16mm (5/8")	27mm (1-1/16")	10mm (3/8")	N/A	up to 12.5mm (1/2")	6mm (1/4")
RS13-10	18mm (45/64")	30mm (1-3/16")	11.5mm (29/64")	N/A	up to 5-6mm (1/4")	10mm (3/8")
RS13-10/S^{3/8}	18mm (45/64")	30mm (1-3/16")	11.5mm (29/64")	N/A	up to 10mm (3/8")	10mm (3/8")
RS13-10/S^{1/2}	18mm (45/64")	30mm (1-3/16")	11.5mm (29/64")	N/A	up to 12.5mm (1/2")	10mm (3/8")

Finish: Satin Chrome
Load Limit: 11.5kg (25lb) each. *Subject to fixing
Allen Wrench: 2.5mm Metric

*The fractional inch and metric measurements are rounded up or down to the nearest value.

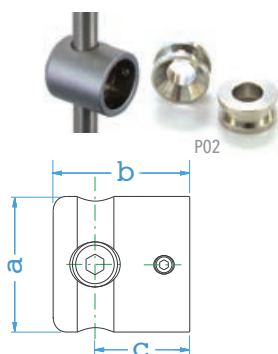
PANEL SUPPORTS WITH HOLES / DOUBLE



Part #	Diameter (a)	Length (b)	Rod Offset (c)	Screw Offset (d)	Panel Thickness (e)	Rod Diameter
RS23	16mm (5/8")	40mm (1-9/16")	10mm (3/8")	N/A	up to 5-6mm (1/4")	6mm (1/4")
RS23/S ^{3/8}	16mm (5/8")	40mm (1-9/16")	10mm (3/8")	N/A	up to 10mm (3/8")	6mm (1/4")
RS23/S ^{1/2}	16mm (5/8")	40mm (1-9/16")	10mm (3/8")	N/A	up to 12.5mm (1/2")	6mm (1/4")
RS23-10	18mm (45/64")	42mm (1-21/32")	11.5mm (29/64")	N/A	up to 5-6mm (1/4")	10mm (3/8")
RS23-10/S ^{3/8}	18mm (45/64")	42mm (1-21/32")	11.5mm (29/64")	N/A	up to 10mm (3/8")	10mm (3/8")
RS23-10/S ^{1/2}	18mm (45/64")	42mm (1-21/32")	11.5mm (29/64")	N/A	up to 12.5mm (1/2")	10mm (3/8")

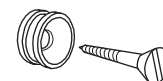
Finish: Satin Chrome
Load Limit: 11.5kg (25lb) each. *Subject to fixing
Allen Wrench: 2.5mm Metric

SUPPORT WITH PO2 BOSS / SINGLE



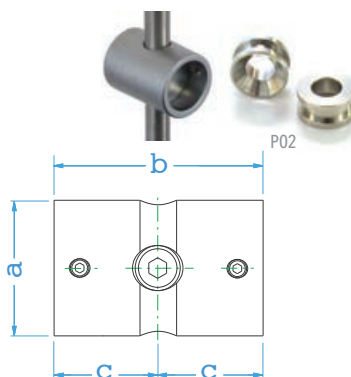
Part #	Diameter (a)	Length (b)	Rod Offset (c)	Screw Offset (d)	Panel Thickness (e)	Rod Diameter
RS03	16mm (5/8")	18mm (45/64")	10mm (3/8")	N/A	any item fit w/ P02	6mm (1/4")
RS03-10	18mm (45/64")	22mm (7/8")	12.5mm (1/2")	N/A	any item fit w/ P02	10mm (3/8")
P02	12mm (15/32")	6mm (15/64")	N/A	N/A	N/A	N/A

Finish: Satin Chrome
Load Limit: 11.5kg (25lb) each. *Subject to fixing
Allen Wrench: 1.5mm, 2mm, 2.5mm Metric



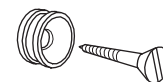
Secure P02 with #10 countersunk wood screw or bolt.

SUPPORTS WITH PO2 BOSS / DOUBLE



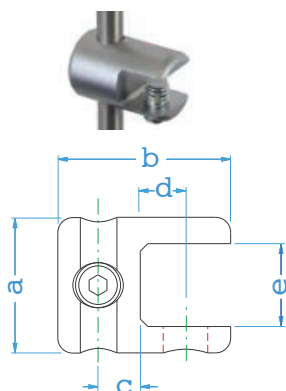
Part #	Diameter (a)	Length (b)	Rod Offset (c)	Screw Offset (d)	Panel Thickness (e)	Rod Diameter
RS04	16mm (5/8")	21mm (53/64")	10mm (3/8")	N/A	any item fit w/ P02	6mm (1/4")
RS04-10	18mm (11/16")	27mm (1-1/16")	12.5mm (1/2")	N/A	any item fit w/ P02	10mm (3/8")
P02	12mm (15/32")	6mm (15/64")	N/A	N/A	N/A	N/A

Finish: Satin Chrome
Load Limit: 11.5kg (25lb) each. *Subject to fixing
Allen Wrench: 1.5mm, 2mm, 2.5mm Metric



Secure P02 with #10 countersunk wood screw or bolt.

SIDE SHELF SUPPORTS / SINGLE

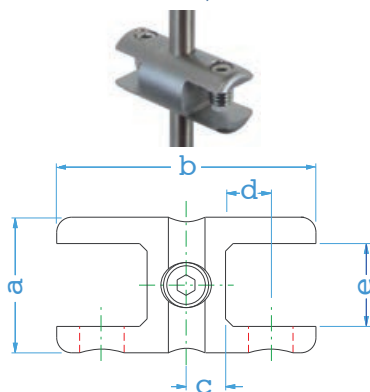


Part #	Diameter (a)	Length (b)	Rod Offset (c)	Screw Offset (d)	Panel Thickness (e)	Rod Diameter
RG06	16mm (5/8")	25mm (63/64")	7mm (9/32")	6mm (15/64")	up to 7mm (1/4")	6mm (1/4")
RG15	20mm (13/16")	29mm (1-1/8")	7mm (9/32")	6mm (15/64")	up to 12.5mm (1/2")	6mm (1/4")
RG06-10	18mm (45/64")	29mm (1-1/8")	10mm (3/8")	6mm (15/64")	up to 7mm (1/4")	10mm (3/8")
RG15-10	20mm (13/16")	29mm (1-1/8")	10mm (3/8")	6mm (15/64")	up to 12.5mm (1/2")	10mm (3/8")

Finish: Satin Chrome
Load Limit: 11.5kg (25lb) each. *Subject to fixing
Allen Wrench: 2.5mm Metric

*The fractional inch and metric measurements are rounded up or down to the nearest value.

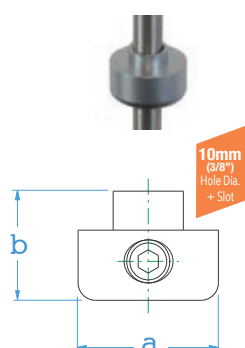
SIDE SHELF SUPPORTS / DOUBLE



Part #	Diameter (a)	Length (b)	Rod Offset (c)	Screw Offset (d)	Panel Thickness (e)	Rod Diameter
RG07	16mm (5/8")	36mm (1-27/32")	7mm (9/32")	6mm (15/64")	up to 7mm (1/4")	6mm (1/4")
RG07-10	18mm (45/64")	40mm (1-9/16")	10mm (3/8")	6mm (15/64")	up to 7mm (1/4")	10mm (3/8")

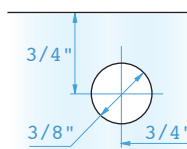
Finish: Satin Chrome
Load Limit: 11.5kg (25lb) each. *Subject to fixing
Allen Wrench: 2.5mm Metric

SUPPORTS FOR DRILLED & SLOTTED SHELF

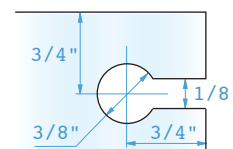


Part #	Diameter (a)	Depth (b)	Rod Offset (c)	Screw Offset (d)	Panel Thickness (e)	Rod Diameter
RS01	16mm (5/8")	8mm (5/16")	N/A	N/A	Shelf drilled & slotted	6mm (1/4")

Finish: Satin Chrome
Load Limit: 11.5kg (25lb) each. *Subject to fixing
Allen Wrench: 2.5mm Metric

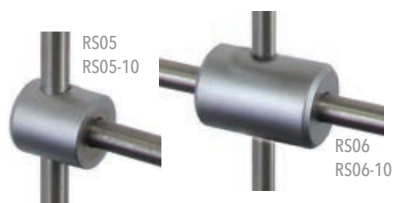


Glass Drilled Only
(Non-Removable)



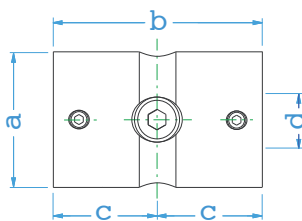
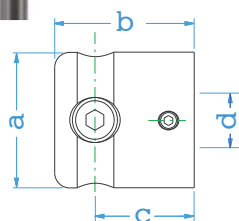
Glass Drilled & Slotted
(Removable)

SUPPORTS FOR 6MM ROD / SINGLE & DOUBLE

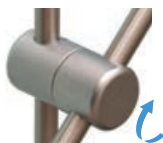


Part #	Diameter (a)	Depth (b)	Cable Offset (c)	Inner Rod Dia. (d)	Panel Thickness (e)	Rod Diameter
RS05	16mm (5/8")	17mm (43/64")	10mm (3/8")	6mm (15/64")	N/A	6mm (1/4")
RS05-10	18mm (45/64")	22mm (7/8")	12.5mm (1/2")	6mm (15/64")	N/A	10mm (3/8")
RS06	16mm (5/8")	20mm (25/32")	10mm (3/8")	6mm (15/64")	N/A	6mm (1/4")
RS06-10	18mm (45/64")	27mm (1-1/16")	12.5mm (1/2")	6mm (15/64")	N/A	

Finish: Satin Chrome
Load Limit: 11.5kg (25lb) each. *Subject to fixing
Allen Wrench: 1.5mm, 2.5mm Metric



SUPPORT FOR 6MM & 10MM ROD



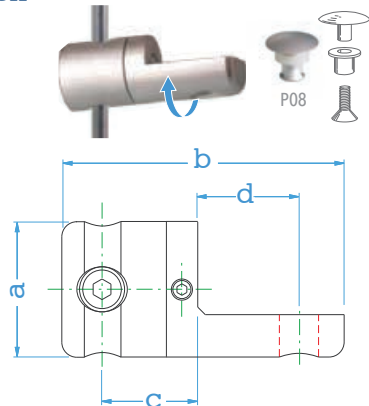
Part #	Diameter (a)	Length (b)	Rod Offset (c)	Inner Rod Dia. (d)	Panel Thickness (e)	Rod Diameter
RR01*	16mm (5/8")	31mm (1-7/32")	15mm (19/32")	6mm (15/64")	N/A	6mm (1/4")
RR01-6/10*	18mm (45/64")	35mm (1-3/8")	16mm (5/8")	10mm (3/8")	N/A	6mm (1/4")
RR01-10*	18mm (45/64")	35mm (1-3/8")	18mm (11/16")	10mm (3/8")	N/A	10mm (3/8")

*Multi-Position Supports - Adjustable to any angle. Can be locked into position.

Finish: Satin Chrome
Load Limit: 11.5kg (25lb) subject to fixing
Allen Wrench: 1.5mm & 2.5mm Metric

*The fractional inch and metric measurements are rounded up or down to the nearest value.

SUPPORTS FOR WOODEN OR GLASS SHELVES SINGLE

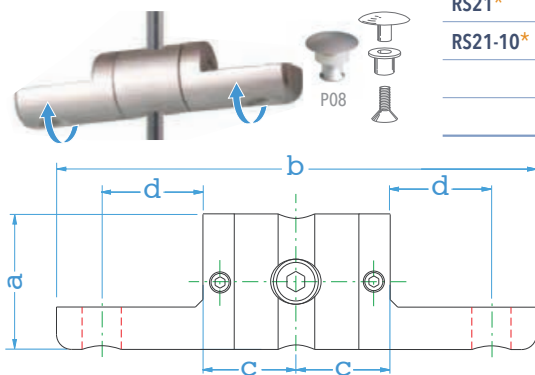


Part #	Diameter (a)	Length (b)	Rod Offset (c)	Screw Offset (d)	Panel Thickness (e)	Rod Diameter
RS11*	16mm (5/8")	39mm (1-1/2")	12.5mm (1/2")	11mm (27/64")	6mm (15/64")	6mm (1/4")
RS11-10*	18mm (45/64")	42mm (1-11/16")	15mm (19/32")	11mm (27/64")	6mm (15/64")	10mm (3/8")
					(for glass shelves w/ P08)	

Finish: Satin Chrome
Load Limit: 11.5kg (25lb) subject to fixing
Allen Wrench: 1.5mm & 2.5mm Metric

*Multi-Position Supports - Adjustable to any angle. Can be locked into position.

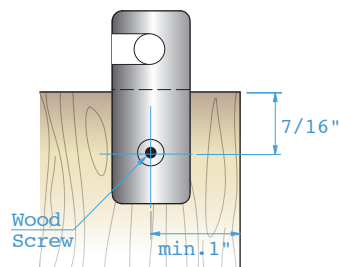
SUPPORTS FOR WOODEN OR GLASS SHELVES DOUBLE



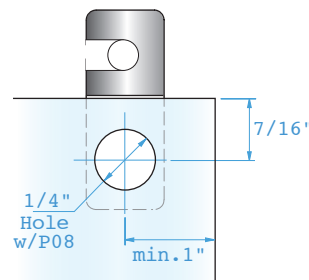
Part #	Diameter (a)	Length (b)	Rod Offset (c)	Screw Offset (d)	Panel Thickness (e)	Rod Diameter
RS21*	16mm (5/8")	64mm (2-33/64")	12.5mm (1/2")	11mm (27/64")	6mm (15/64")	6mm (1/4")
RS21-10*	18mm (45/64")	68mm (2-3/4")	15mm (19/32")	11mm (27/64")	6mm (15/64")	10mm (3/8")
					(for glass shelves w/ P08)	

Finish: Satin Chrome
Load Limit: 11.5kg (25lb) subject to fixing
Allen Wrench: 1.5mm & 2.5mm Metric

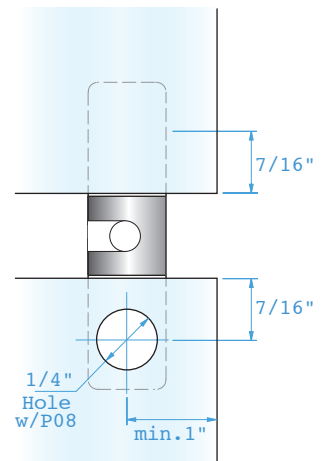
*Multi-Position Supports - Adjustable to any angle. Can be locked into position.



Wooden Shelf Fixing
RS11 Support + Screw

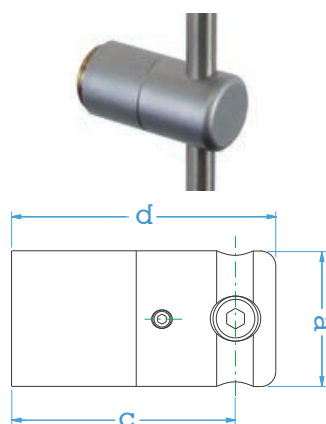


Glass Shelf Fixing
RS11 Support + P08 Screw (Drilled Shelf)



Glass Shelf Fixing
RS21 Support + P08 Screw (Drilled Shelf)

WALL FIXING FOR RODS

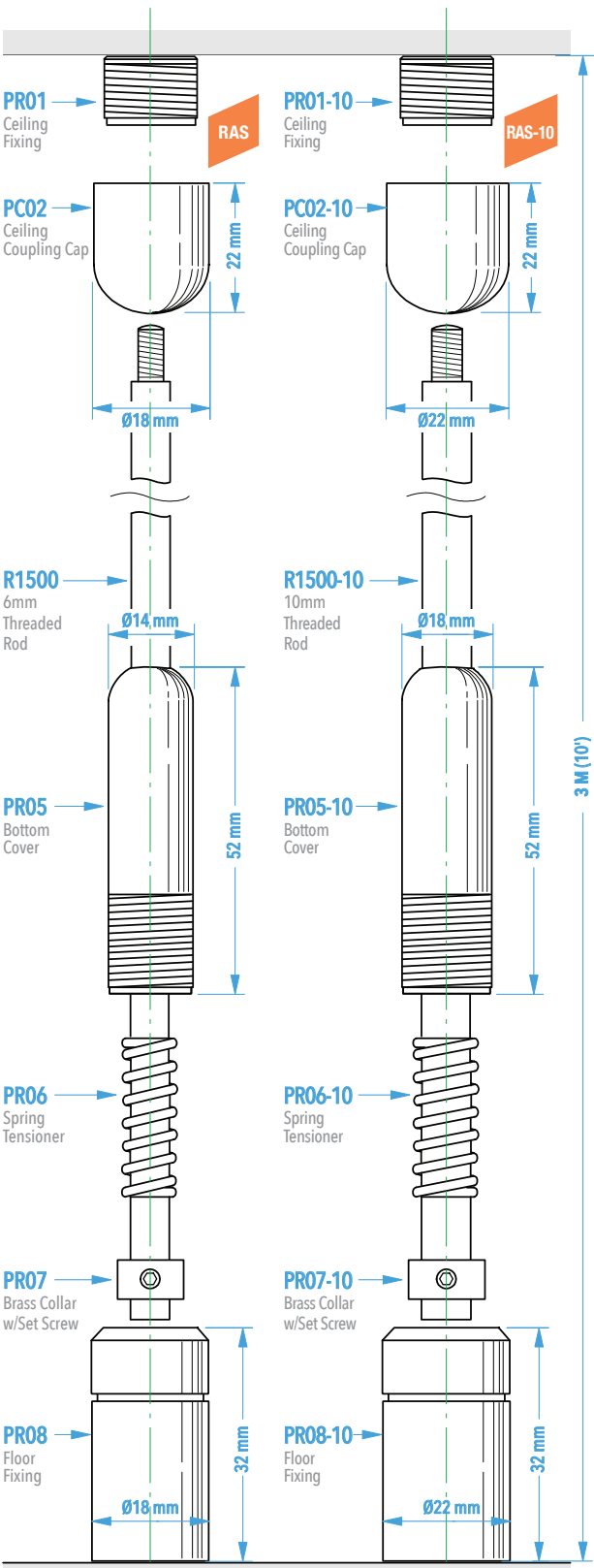


Part #	Diameter (a)	Length (b)	Rod Offset (c)	Screw Offset (d)	Panel Thickness (e)	Rod Diameter
WM11*	16mm (5/8")	32mm (1-1/4")	25mm (1")	N/A	N/A	6mm (1/4")
WM11L*	16mm (5/8")	54mm (2-1/8")	46mm (1-13/16")	N/A	N/A	6mm (1/4")
WM11-10*	18mm (45/64")	36mm (1-13/16")	27mm (1-1/16")	N/A	N/A	10mm (3/8")
WM11L-10*	18mm (45/64")	59mm (2-5/16")	50mm (2")	N/A	N/A	10mm (3/8")

Finish: Satin Chrome
Load Limit: 11.5kg (25lb) subject to fixing
Allen Wrench: 1.5mm & 2.5mm Metric

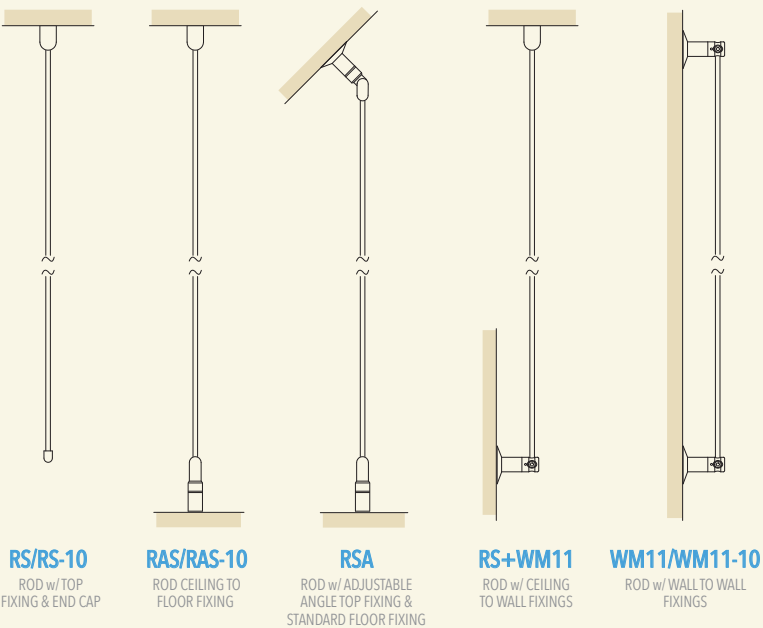
*Multi-Position Supports - Adjustable to any angle. Can be locked into position.

*The fractional inch and metric measurements are rounded up or down to the nearest value.



Part #	Rod Diameter	Description
RAS*	6mm (1/4")	Standard Rod Fixing Set (*Rods Not Included)
RAS-10*	10mm (3/8")	Standard Rod Fixing Set (*Rods Not Included)
Note: Join multiple rods to make any length.		

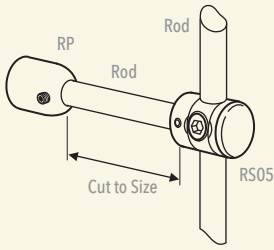
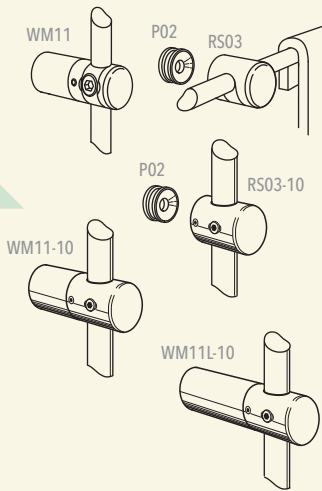
*Lit Rod Sets - Can be also used with low voltage lighting or LED Displays.



6mm Wall Fixing
Fix rods directly back to the wall with WM11 or RS03.

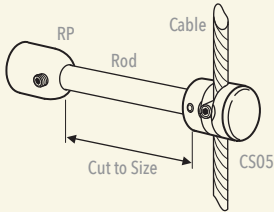
10mm Wall Fixing
Fix rods directly back to the wall with WM11-10, WM11L-10 or RS03-10.

Ideal for creating high impact graphics presentations.



Customized Depth
Fix rods back to the wall using RP - cut rod length and fix with RS05.

For better stability fix cables back to the wall using RP and 6mm rods attached to cables using CS05 support.



6mm Rods - Left handed with M4 thread
10mm Rods - Right Handed with M6 thread

With a male thread at one end and a female at the other, the rods allow to be screwed into the top fixing or joined together to make longer lengths. Once screwed together the rods appear continuous.

